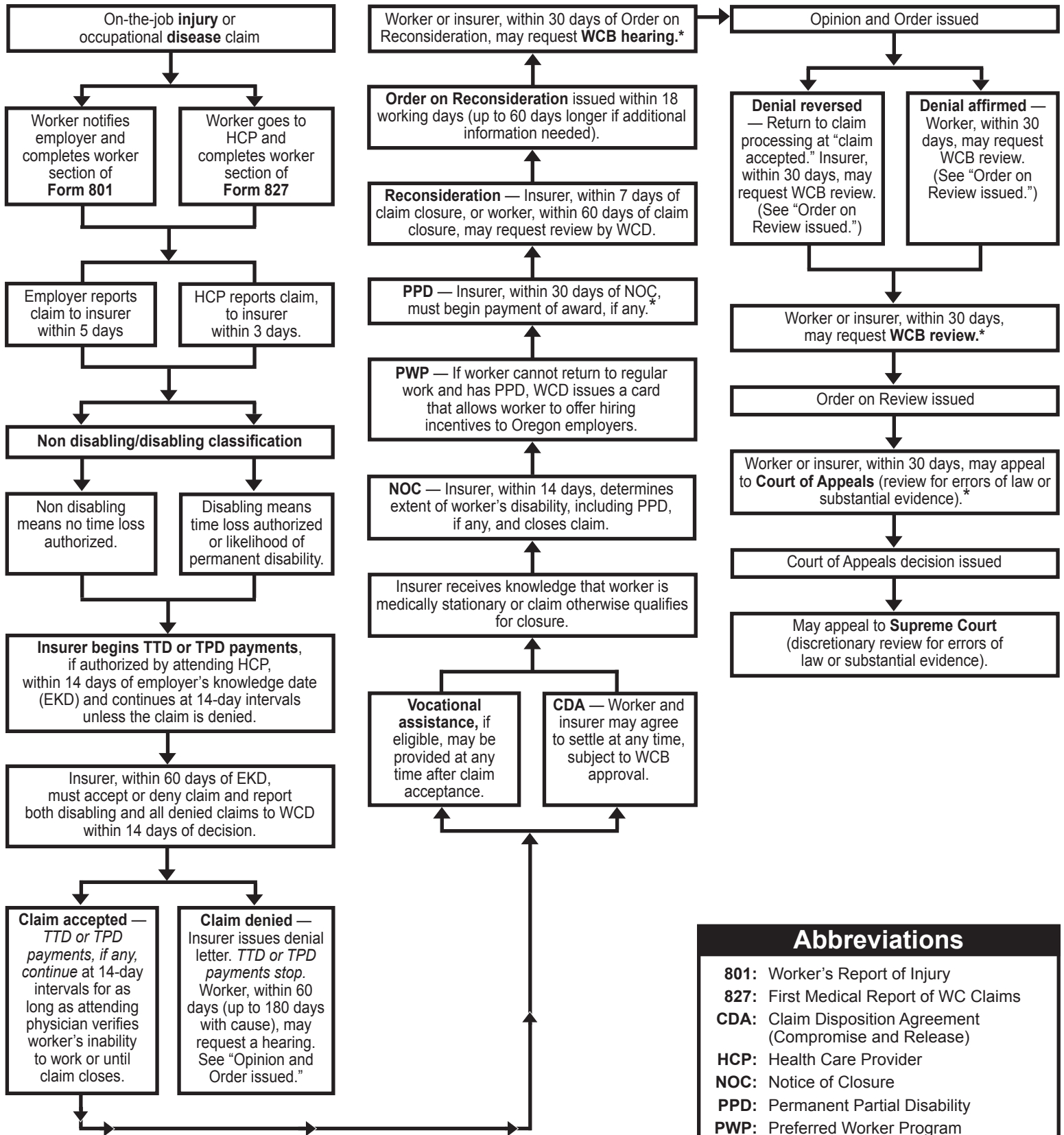


Workers' Compensation Flowchart

(This is an overview. Some programs and processes are not covered.)



Abbreviations	
801:	Worker's Report of Injury
827:	First Medical Report of WC Claims
CDA:	Claim Disposition Agreement (Compromise and Release)
HCP:	Health Care Provider
NOC:	Notice of Closure
PPD:	Permanent Partial Disability
PWP:	Preferred Worker Program
TTD:	Temporary Total Disability
TPD:	Temporary Partial Disability
WCB:	Workers' Compensation Board
WCD:	Workers' Compensation Division



Workers' Compensation Division
 350 Winter St. NE
 P.O. Box 14480
 Salem, OR 97309-0405
www.wcd.oregon.gov

* Some compensation is stayed (not paid) during appeal (see ORS 656.313)